



GMT MONTHLY MEMBERSHIP PROGRESS REPORT

Results as of: 2/29/2020

Multiple District 33

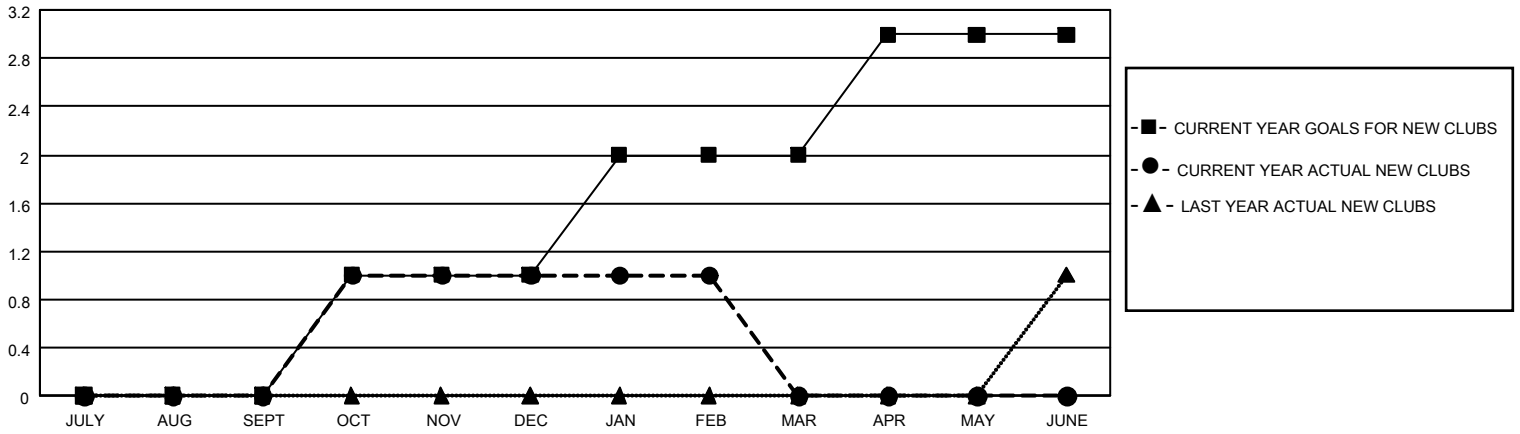
LOCATION: MASSACHUSETTS

GMT: OPEN

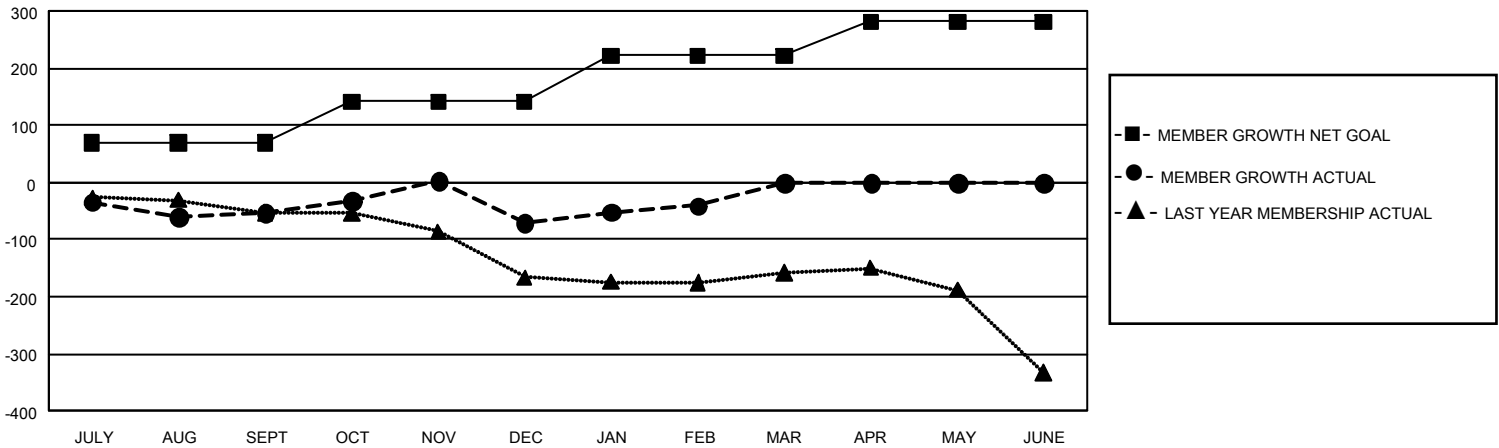
GMT CA 1

| Clubs | | | | Members | | | |
|-----------------------|---------------|-----------|---------------|-----------------------|------------------------|----------------------|--|
| RESULTS FOR 2019-2020 | | | | RESULTS FOR 2019-2020 | | | |
| QUARTER | NEW CLUB GOAL | NEW CLUBS | DROPPED CLUBS | QUARTER | MEMBER GROWTH NET GOAL | MEMBER GROWTH ACTUAL | DROPPED MEMBERS ACTUAL (including transfers) |
| JULY/AUG/SEPT | 0 | 0 | 2 | JULY/AUG/SEPT | 210 | 100 | 134 |
| OCT/NOV/DEC | 3 | 1 | 1 | OCT/NOV/DEC | 213 | 180 | 191 |
| JAN/FEB/MAR | 3 | 0 | 0 | JAN/FEB/MAR | 243 | 128 | 93 |
| APR/MAY/JUNE | 3 | 0 | 0 | APR/MAY/JUNE | 177 | 0 | 0 |

GOALS AND ACTUAL NEW CLUBS CUMULATIVE



GOALS AND ACTUAL MEMBERS CUMULATIVE



| | | | |
|---|--|---------------------------------|----------------|
| DROPPED CLUBS: 3 | 115 CLUBS OF 221 ADDED 1 OR MORE NEW MEMBERS | <u>GENDER DISTRIBUTION</u> | |
| <u>DROPPED MEMBERS</u> | | MALE | 4,513 (64.52%) |
| DECEASED | 64 | FEMALE | 2,482 (35.48%) |
| CLUB CANCELLED | 12 | TOTAL FAMILY UNIT MEMBERS 1,132 | |
| OTHER | 342 | | |
| TOTAL | 418 | | |
| CLICK HERE FOR CUMULATIVE MEMBERSHIP DATA | | | |
| | | | |